



Concorde International Family Study Programme



Summer 2023

We look forward to welcoming your family to
Canterbury this summer!

English Language Courses for Ages 5+

+

Activities and Excursions for all the Family

+

Self-Catering Accommodation

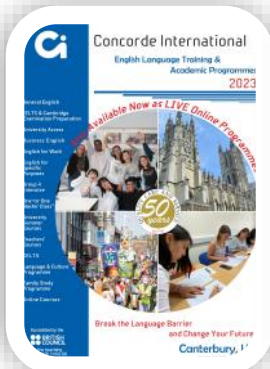


Accredited by the
BRITISH COUNCIL
for the teaching
of English in the UK

*Playtime is not an accredited course



Concorde International welcomes you to our Family Study Programme in Canterbury; close to London, the airports, the Channel Tunnel, Port of Dover and the seaside! Our Family Study is weekday English classes for parents, adults, and children from the ages of 5-17, plus various combinations which includes extra classes, self-catering accommodation and an amazing social programme too. While you are in class at our Adult Summer Centre on weekday mornings, your kids will be looked after in class or nursery and with Concorde's 48 years of experience, you'll find a course combination to suit !!



www.concorde-int.com
sales@concorde-int.com
Tel: 0044 1227 451035

Click the pictures above to view these documents!



About Canterbury



Canterbury welcomes almost 3 million visitors each year.

Situated in the Garden of England, the city is internationally famous for its three World Heritage sites, including the magnificent cathedral (Thomas Becket), St Augustine's Abbey and St Martin's Church.

It is home to three universities with more than 45,000 students from all over the world. The pedestrian-friendly city centre is a safe environment where you can find everything you need, from souvenirs to Rolex watches and high-end shopping, and music and the latest fashions. There are many amazing cafes and restaurants offering a wide range of dining and entertainment. London is just an hour away by high-speed train, and the seaside towns of Folkestone and increasingly-fashionable Whitstable are close by.

Three major European capitals are within easy reach:

- London St. Pancras, 55 minutes
- Paris Gare du Nord, one hour and 30 minutes
- Brussels Central, two hours and 35 minutes

Easy access to all major London airports:

- London Gatwick, one hour and 30 minutes
- London Heathrow, 2 hours
- London Stansted, one hour and 45 minutes
- London Luton, 2 hours





Classes and Courses

Summer General English Courses, Mon-Fri from 09:00-12:30

General English courses start each Monday. The 15-hour programme in the mornings provides study practice of the essential skills of speaking, listening, reading and writing. Maximum class size: 12 students. Beginner to Advanced (A1 to C1) levels.

(Intensive 21/25-hour courses are available if you don't want our social programme.)



£298 p/w

Summer G4 Intensive General or Business English, Mon-Fri from 09:00-12:30

This is an intensive English course for adults aged 21+. Classes are held at our Business School in the city centre and are ideal for professionals who want to expand their business English language skills or prefer to learn in small, focused groups.

Maximum class size: 4 students. Pre-Intermediate to Advanced (B1 to C1) levels.



£472 p/w

Summer Teacher Development Course, Mon-Fri 09:30-12:30, Mon-Thu 13:45-16:30

This Course offers 25 hours of tuition, seminars and workshops per week on practical methods and approaches, for example CLIL, teaching pronunciation, motivating learners and classroom management.

Adults enrolling on Teacher Development Courses must come with another adult who can supervise their children during the afternoons. Students on this course must attend for the full 25 hours tuition per week.



£396 p/w

Summer One-to-One Masterclass™

Designed to meet your specific language or business needs. The syllabus is negotiated between our highly-experienced teachers and you, following the completion of a Needs Analysis Form to create a bespoke syllabus for you.

Maximum class size: 1 student. Beginner to Advanced (A1 to C1) levels.



£60 per hour

Junior Playtime Course, Mon-Fri from 09:00-12:30, Ages 5-7 years*

For the youngest family members each summer; children aged 5-7 learn English through play and fun activities. Our experienced and qualified teachers keep things light and fun. *Playtime is not accredited by the British Council.

Maximum class size: 15 students. Beginners +



£289 p/w

Junior Summer Courses, Mon-Fri from 09:00-12:30. Two afternoons 13:45 to 16:30, Ages 8 - 17 years

Dynamic and challenging English language courses for children and teenagers aged 8-17 years. Students focus on speaking, listening, pronunciation, skills for life and task-based project work. Maximum class size: 15 students. Beginner to Advanced (A1 to C1)



£320 p/w

Family Activity Programme

Once you have chosen a morning weekday course from the choices above, why not combining it with our Family Activity Programme? It offers a good balance of fun, cultural and social events for families to enjoy together and mix with other families from all over the world.



Includes:

- 1 x Half Day Excursion
- 1 x Full Day Excursion
- 2 x Afternoon Activities
- 2 x Evening Activities

Additional Cost P/W Each:

£218



The Activity Programme

This programme has been developed especially for families looking to combine English Language Learning with a cultural experience. Places are limited to 'first-come-first-served' so we cannot guarantee availability if you have not pre-booked.

We advise booking early in advance to avoid disappointment!

Week 1	Example Morning	Example Afternoon	Example Evening
Sun	Arrivals Day		Free Evening
Mon	Classes	Orientation Walk of Canterbury & visit to Cathedral	BBQ
Tue	Classes	Family Activity Afternoon Sports and Games / Quizzes	Free Evening
Wed	Classes	Classes for children Free time for adults	Disco / Pub Quiz
Thu	Classes	Excursion to Leeds Castle	Free Evening
Fri	Classes	Classes for children Free time for adults	Free Evening
Sat	Full day excursion to Greenwich & London River Thames Tour included		Free Evening

Week 2	Example Morning	Example Afternoon	Example Evening
Sun	Lazy Sunday at home or free time to explore Canterbury, Kent or London		Free Evening
Mon	Classes	Canterbury River Tour	BBQ
Tue	Classes	Family Activity Afternoon Sports and Games / Quizzes	Free Evening
Wed	Classes	Classes for children Free time for adults	Disco / Pub Quiz
Thu	Classes	Excursion to Kent Life Farm	Free Evening
Fri	Classes	Classes for children Free time for adults	Free Evening
Sat	Full Day Excursion to Brighton and Sealife centre		Free Evening

This is a sample programme - please contact us and we will be happy to send you the weekly programme for the dates of your stay.

Programme Information

Monday Afternoon Local Visit

Get to know Canterbury and visit one of its famous landmarks. A Concorde International member of staff will show you around and give you interesting information.

Monday Evening BBQ

Each Monday evening there is a BBQ in a local pub where you can meet other families in a relaxed social atmosphere.

Tuesday Afternoon Sports & Games

Cricket, rounders, badminton, football and other games, activities or quizzes for children and adults to enjoy!

Wednesday Evening

Classes for children in the afternoon, and for the parents, free time! In the evening, a Junior disco for 10-17 year olds, with Music & Games for 7-9 year olds and a Pub Quiz for adults.

Thursday Afternoon Excursion

Local visit to the beach or a famous place with staff to escort and give you some basic information.

Friday afternoon Free Time

Free afternoon for parents; children aged 8+ will be in classes.

Saturday Full-Day Excursion

Full day excursion by private coach to family-friendly destinations such as Greenwich, London, Brighton etc.





Accommodation Options

There's a great range of accommodation for families in the Canterbury area including:

- Local B & B accommodation
- Hotel accommodation
- Self catering university accommodation
- Private apartments / houses

Some properties have parking which is ideal for families coming with their own car using Eurotunnel or the ferry, or for those wanting to hire a car to explore the area further.

Whatever your budget and tastes, we can advise you and help you find suitable accommodation for in the local area.

University Accommodation

Canterbury has a mix of traditional and modern student houses and apartments. These are for university students to live in from September to June each year. In July and August they are available for summer school students and families to rent per week at much lower prices than a hotel.

The bedrooms are standard single study bedrooms and have a single bed, desk, wardrobe and drawers. Each property has a kitchen / dining room and shared bathrooms for the whole family.



Self-catering apartments/houses options

Accommodation
2 beds from £348 (per apartment per week)
3 beds: £499 (per apartment per week)
4 beds: £653 (per apartment per week)
5 beds £805 (per apartment per week)
Ensuite also available at additional cost

All prices are nett and subject to availability

Private Accommodation

The standard of accommodation depends on your budget and number of beds you require.

We can also give you information about renting private accommodation. This is ideal for families who want to stay for a longer period.



Accommodation Bookings

We will advise you of the terms and conditions and help you with any problems before they arrive. The accommodation provider will assist them on arrival and be available in case of any problems. Concorde International will only recommend providers who can offer a good standard of service.

Accommodation must be paid for when you book.



Airport Transfers

Airport Transfers

We can meet you at Arrivals, take you directly to your accommodation in Canterbury, and take you directly back to the airport at the end of their stay. We can provide a vehicle suitable for the size of your family. Airport transfers must be booked in advance and it is your responsibility to provide us with the correct flight details and pick-up times at least 7 days before you arrive. Prices are estimates for 2023, one-way, and per vehicle.



Private Transfers for 1 to 4 passengers

These cars are suitable for 1 to 4 passengers, allowing for 1 average suitcase and 1 hand luggage each*.

The price is per vehicle - for example London Gatwick to Canterbury is £155 in total. So, if there are three passengers, then that works out as the equivalent of £51.66 per person, one-way.



Private Transfers for 5 to 8 passengers

These cars are suitable for 4 to 8 passengers, allowing for 1 extra piece of hand luggage each*.

The price is per vehicle - for example London Heathrow to Canterbury is £210 in total. So, if there are six passengers, then that works out as the equivalent of £35 per person, one-way.

***Do they have a lot of luggage?**

Upgrade their



**Private Taxi to a
Private Minibus!**



Airport	Car	8-Seater (subject to availability)	16-seater minibus
London Heathrow	£165 one way	£210 one way	Please contact us for pricing and availability
London Gatwick	£155 one way	£195 one way	
London Stansted	£165 one way	£210 one way	
London City Airport	£165 one way	£210 one way	
London Luton Airport	£185 one way	£220 one way	
St Pancras International	£175 one way	£225 one way	
Ashford International	£70 one way	£75 one way	

All drivers and private taxi companies are known to us, fully police checked, and will have your name(s) in advance. Remember you are responsible for sending us flight details at least 7 days before arrival. After this time we cannot guarantee a transfer. Transfers must be paid for in advance. We cannot be held responsible for delays if incorrect flight details are given - please check you have sent us the correct information. We will monitor flight times in case of delays. *Storage space is limited - additional luggage may be charged extra.

For more information please contact us at sales@concorde-int.com



FAQs: Frequently Asked Questions and Answers

Frequent Questions and Answers

Can families choose to join the social programme after they have arrived? We cannot guarantee availability on arrival. We recommend booking the Family Activity Programme at the same time as the course. **Book in advance to avoid disappointment.**

If I does a 21 or 25 hour or TDC course, can I join the activity programme? Unfortunately not as these courses run at the same time as the afternoon activities.

Can we parents do the activity programme and not the course? At least one adult and one child from the family must study. Adults and children who do not study will still need to pay the extra for the Programme.

I don't want to do everything in the programme - can I choose one or two activities? No, this is a fixed package price and we do not sell these separately.

Can children enrol on Junior Tuition and Programme course instead? Yes. The Junior Summer Programme is for children aged 8 to 17 only but is different to the Family Activity Programme. This is for children only; the parents cannot join any of these activities or excursions.

Can I book the accommodation only and not study? Unfortunately not, but we will be happy to advise you of local accommodation providers, including B&B, hotels and university self catering accommodation.

Can I book my accommodation on arrival? We cannot guarantee availability on arrival, and you may not secure the number of beds or standard of accommodation you would like. This is at your own risk.

When will I receive final information regarding the courses? Once the full payment has been received, 30 days prior your arrival, you will receive your welcome pack with detailed information via email for you.

Additional costs - bus passes

Stagecoach buses are a cheap and easy way of getting around and families can even go to the beach! Weekly bus passes for unlimited travel around Canterbury and East Kent can start at just £18.50 per person per week!

About [Bus Passes](#)
[Download the Bus App](#)



Additional costs - children under 5 years old

For children aged 1-4 years old, parents can contact Canterbury Day Nursery in nearby Havelock Street. For more information and prices please contact them directly via their website www.canterburydaynursery.co.uk or telephone 0044 1227 454557

Please note that we cannot book this service for you.



Additional costs - food!

We provide self-catering accommodation and there are many supermarkets in the city centre and near the accommodation. Don't forget to try the many cafés, restaurants and bistros in Canterbury city centre, and tell them that most restaurants offer family-friendly options such as smaller child portions at reduced rates.





Don't Miss Out!



We look forward to welcoming you
to Canterbury in summer 2023 !



For further information please contact us: sales@concorde-int.com

Concorde International, Arnett House, Hawks Lane, Canterbury, Kent CT1 2NU, United Kingdom

Tel: +44 (0)1227 451035 / Fax: +44 (0)1227 762760 / www.concorde-int.com